

ISOLPAK ALU INDOOR 280

Technical data sheet

Rigid BOPET-ALU-PVC jacketing film for Indoor insulation

Characteristics:

- Partially acid-, alkali-, salt solution-, fat-, oil-, bacterium- and fungus-resistance.
- Excellent physical features, such as flexibility and elasticity.
- No special care or maintenance required due to antistatic components.
- Surface: smooth with dull finish on one side.

Description:

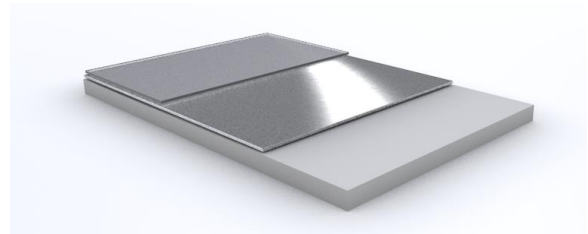
TTM Isolpak ALU Indoor is a multi layer laminate of aluminum, coated with a transparent BOPET film and a PVC backing. This system is highly punctured and tear resistant as well as partially flame retardant and can be used for interior facing of hot and cold insulation. It combines an excellent vapor barrier with water tightness. It is an easily useable material for rapid covering and it is extremely resistant to damaging environmental effects.

Packaging:

Compact, space-saving packaging, required storage space per pallet: app. 1 m². The films are rolled on cardboard cores with 5mm wall thickness and 50mm internal diameter.

Packing units: Standard pallet: 20 rolls of 25 m² each = 500 m²

Construction:



- Transparent BOPET Layer
- Aluminium, glossy
- PVC

Technical data:

Property	Norm	unit	Value
Total weight		g/m ²	398
Thickness appr.		mm	0,280
Thickness tolerance		mm	± 0,05
Width		mm	1000 / 1065
Width tolerance		mm	± 2
Tensile strength	EN ISO 527-3	N/m m	>35
Elongation at break	EN ISO 527-3	%	40
Tear strength	EN ISO 527-3	N	82
Puncture Ø 3,0mm	prEN 14 477	N	95
LOI [Limited oxygen index]		% O ²	40
Sd-Value			>1500
Temperature resist.		°C	-25 to +65

Our products are the result of fundamental research. They correspond to the latest technical standard. For their useful application we give data and technical information to the best of our knowledge but, however, without any warranty. In special cases the user shall make his own tests to determine the suitability of the products for his purpose.